

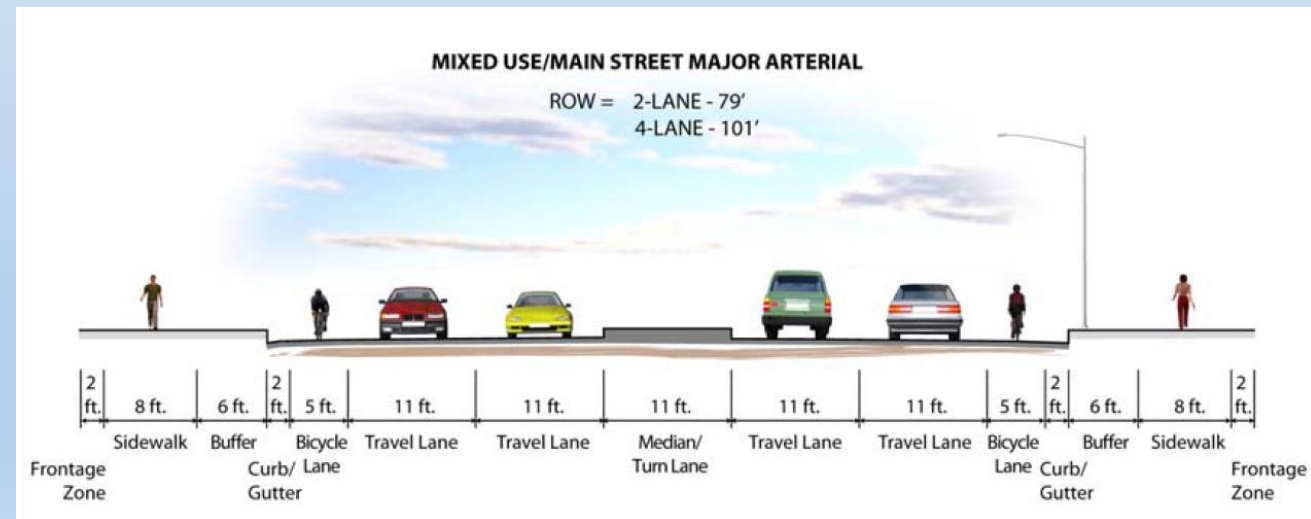
# Errecart Blvd Alignment

April 2015



# Errecart Blvd Alignment

- Master Plan-Major Arterial when completed
  - 4 Lane 101' ROW needed
- Provides alternate route to Silver Street and Lamoille Highway
- Corridor for Utility Extensions
- Interest from Developers
- Secondary Route to the Hospital
- Staff has evaluated 2 options
- Provides access to infill properties for development



# Option 1

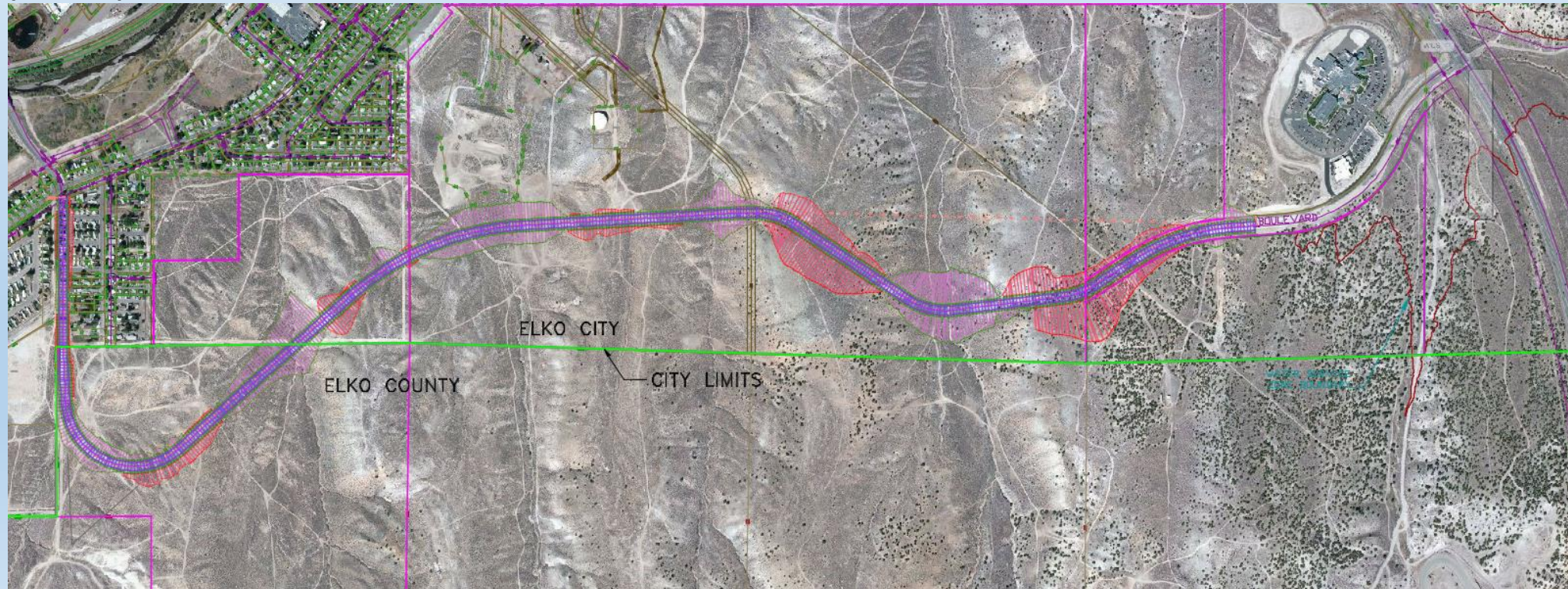
- 11,804 LF Roadway
- 800,000 CY Cut/Fill
- Est. Cost \$25-\$30 Mil
- Requires vacation and realignment of ROW near Hospital





# Option 2

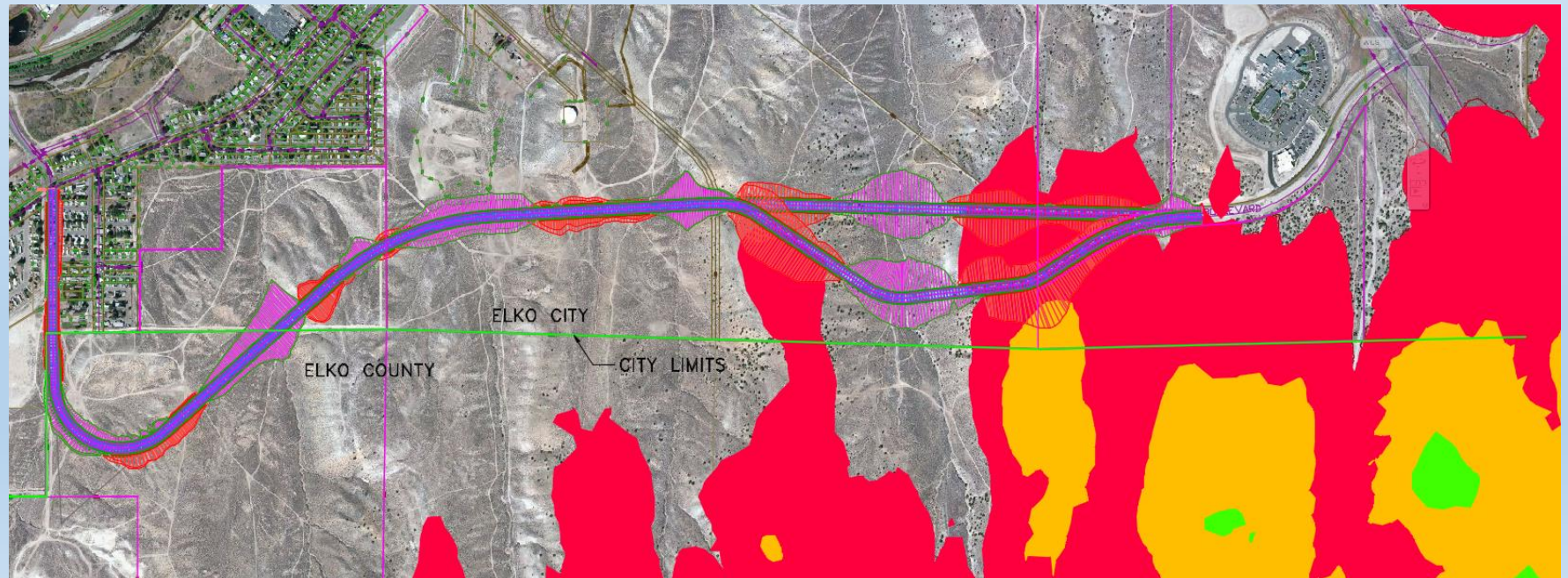
- 12,112 LF Roadway
- 1,001,000 CY Cut/Fill
- Est. Cost \$28-\$35 Mil
- Utilizes Existing Alignment of Errecart near Hospital





# Other Considerations

- Shaded areas are outside of current Water Zones
- Majority of property can be serviced off of existing 5400' zone
- Future Roadway connections, S. 9<sup>th</sup> St, 12<sup>th</sup> St will be provided as Development occurs



# Recommendation from Staff

- Selection of Option 1
- Meet with Property Owners about dedicating necessary ROW and easements, priority shall be for properties in the City of Elko prior to areas that require annexation
- Record ROW and easements once all property owners are agreeable to the alignment

